

NEW
DELHI

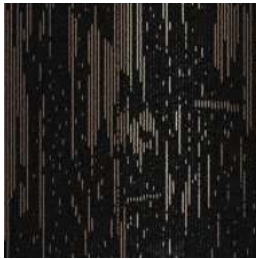


CONSTRUCTION	LOOP
PILE FIBER COMPOSITION	100% Olefin
YARN TYPE	BCF
DYE METHOD	Solution Dyed
PILE WEIGHT	800 g/m ²
NUMBER OF TUFTS	237000/m ²
TUFTING GAUGE	1/12"
PRIMARY BACKING	Non-Woven
SECONDARY BACKING	StableShield - 100% Vinyl
OPTIONAL BACKINGS	Recova -PU Cushion, EcoShield -100% Recycled Vinyl
TILE SIZE	50 cm x 50 cm
PILE HEIGHT	3.0 mm / 6.5 mm
TOTAL PILE HEIGHT	8.0 mm
PILE TREATMENT	INVISTA Anti-Soil Treatment, Anti-Microbial (Optional)
RECOMMENDED INSTALLATION	Quarter Turn or Brick

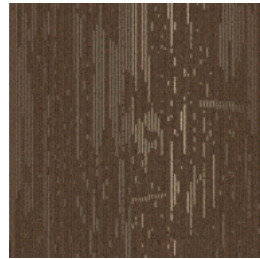


SPECIFICATIONS

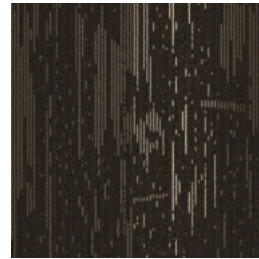
COLOURLINE



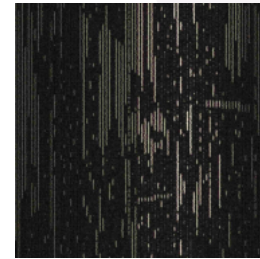
New Delhi - 845



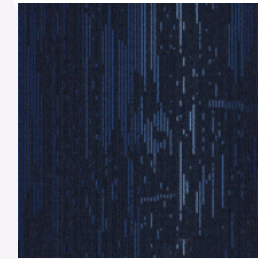
New Delhi - 846



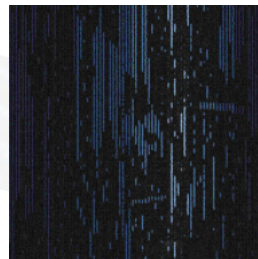
New Delhi - 847



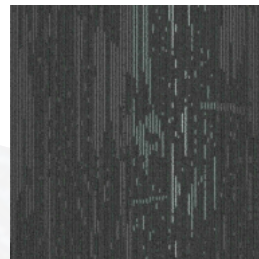
New Delhi - 848



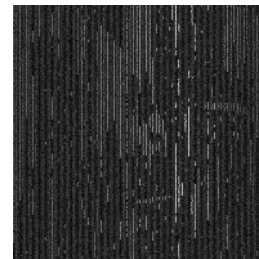
New Delhi - 857



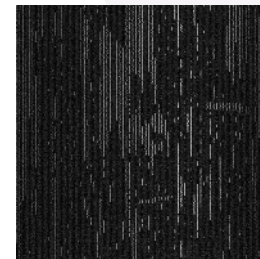
New Delhi - 858



New Delhi - 876



New Delhi - 878



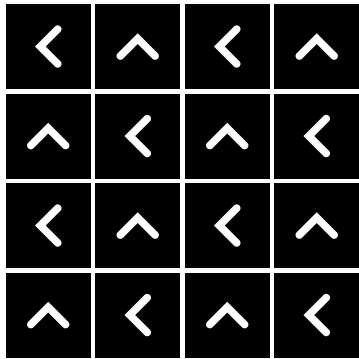
New Delhi - 879



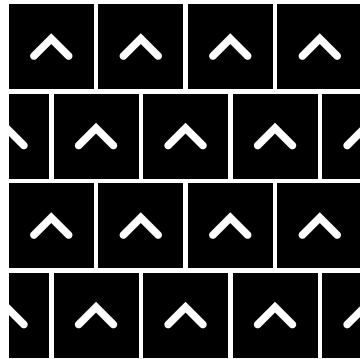


HOW TO INSTALL

QUARTER TURN



BRICK





Standard
CARPETS

www.standardcarpets.com